

## Premium Preparation Sink Unit with 2 Bowls - Right Drain

ITEM # \_\_\_\_\_

MODEL # \_\_\_\_\_

NAME # \_\_\_\_\_

SIS # \_\_\_\_\_

AIA # \_\_\_\_\_


**132940 (LR2DSXPEP)**

 Sink unit with 2 bowls  
 500x500x290 mm and right  
 drainer

### Short Form Specification

#### Item No.

The 50mm high worktop in 304 AISI stainless steel, 1,2mm in thickness, is sound-deadened and has an overflow rim and welded corners. Integral rear upstand, h=100mm, with 10mm radius. All-round apron panelling in 304 AISI st/st (except where the dishwasher is placed). Lower shelf placed under the bowls. Round section legs and feet in 304 AISI stainless steel, 50mm in diameter. Height-adjustable feet (+0-50mm).

N. 2 bowls mm500x500x300h with overflow pipe and 2" drain hole; drainer (on the right hand side) with void under space to lodge an undercounter dishwasher.

### Main Features

- Sturdiness, stability and reliability of table accurately tested.

### Construction

- 50 mm thick lower shelf, in 304 AISI stainless steel, can be easily slotted into position, 200 mm from the floor.
- Round section legs with feet in 304 AISI stainless steel, 50 mm in diameter, adjustable in height by +0/-40 mm.
- 100 mm upstand with 10 mm radiused corner and 13 mm deep, designed to be used against a wall.
- Bottom part of drain left free to house an undercounter dishwasher.
- Wide range of taps are available to suit every need.
- Drainage area suitable for drying operations
- Heavy duty construction entirely in AISI 304 stainless steel to offer maximum durability.

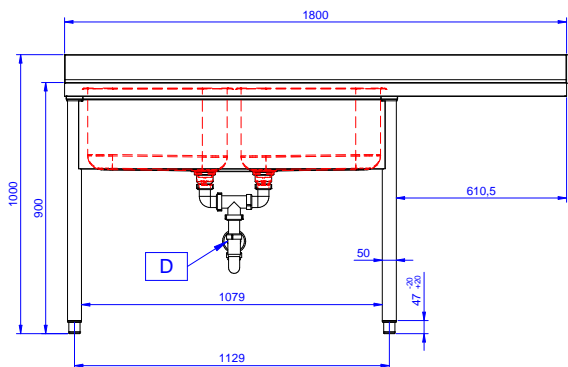
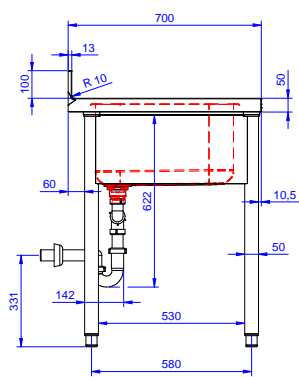
### Optional Accessories

- Double plastic drain syphon 2" PNC 850022 ☐
- Lower shelf for 1200mm for units PNC 855282 ☐
- 3-sided underframe for 1200mm tables PNC 855290 ☐
- Wheel kit for cupboards, 4 wheels (2 with brakes), D=1000 mm PNC 855299 ☐
- Retractable hose spray unit, 10 meters PNC 855320 ☐
- Retractable hose spray unit, 15 meters PNC 855321 ☐
- Elbow operated mixer tap with spout, 3/4" single hole PNC 855322 ☐
- Elbow operated mixer tap short spout, 3/4" single hole PNC 855323 ☐
- Retractable hose spray unit, 6 meters PNC 855327 ☐
- Foot operated Mixer tap with spout & with hot&cold pedals, 3/4" PNC 855328 ☐
- Elbow operated mixer tap with spout, 3/4" single hole PNC 855374 ☐
- Elbow operated mixer tap with short spout, 3/4" single hole PNC 855375 ☐
- Single hole deck mounted mixing temperature monoblock faucet PNC 855382 ☐
- Single hole deck mounted extra robust pot filling mixing temperature faucet PNC 855383 ☐
- Single hole deck mounted mixing temperature faucet with short spout PNC 855384 ☐
- Single hole deck mounted mixing temperature pre-rinse unit PNC 855385 ☐
- Single hole deck mounted elbow operated mixing temperature faucet with pre-rinse unit PNC 855386 ☐
- Single hole deck mounted riser add-on mixing temperature faucet with pre-rinse unit PNC 855387 ☐
- Single hole deck mounted elbow operated mixing temperature faucet with short pre-rinse unit PNC 855388 ☐

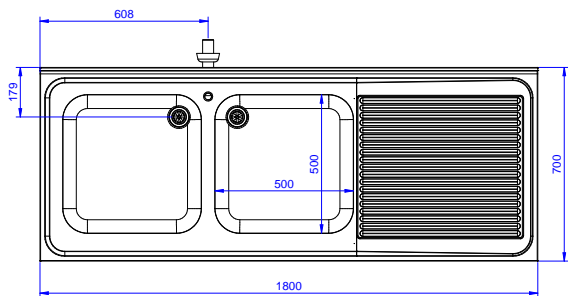
APPROVAL: \_\_\_\_\_

- Single hole deck mounted riser add-on mixing temperature faucet with pre-rinse unit PNC 855389 ☐
- Single hole deck mounted mixing temperature faucet with pre-rinse unit PNC 855390 ☐
- Floor fastening kit for 2 square legs PNC 865386 ☐
- False bottom for right and left hand 500x500 mm bowl PNC 895200 ☐
- Single plastic drain syphon 2" for sinks PNC 895313 ☐

# Premium Preparation Sink Unit with 2 Bowls - Right Drain

**Front**

**Side**


D = Drain

**Top**


## Key Information:

External dimensions, Width:	1800 mm
132940 (LR2DSXPEP)	
External dimensions, Depth:	700 mm
External dimensions, Height:	900 mm
Upstand Dimensions, Height:	100 mm
Upstand Dimensions, Depth:	13 mm
Upstand Dimensions, Radius:	R=10
Bowls number	2
Bowl dimensions	500x500xH300
Worktop thickness:	50 mm
Net weight:	80 kg